

# F L E X Y

*Modular system with a modern and clean design, suitable for covering large areas without central obstructions.*

*Available in 10 different sizes which can be combined together. The system allows to combine one or several modules, depending on the size of the area.*

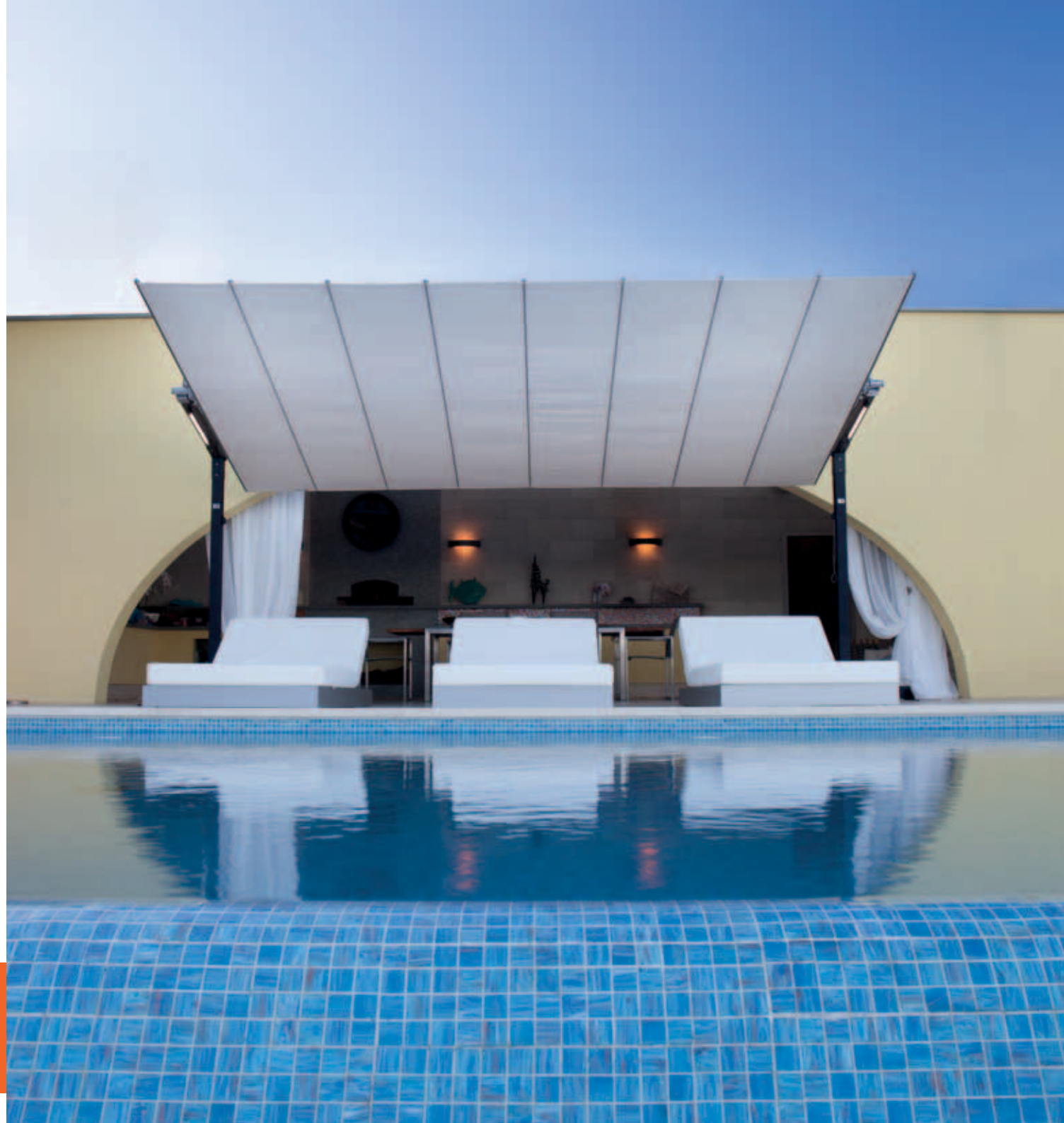
*Ideal for both commercial use (hotels, restaurants...) and residential use (villas, private gardens).*

*The canopy fabric folds easily thanks to a system which can either be electric or manual, and can be tilted to shade a wider area throughout the day.*

*Aluminium frame with stainless steel hardware.*

*Flexy can be supplied with freestanding bases or in-ground mounts.*

*All FIM products are designed and made in Italy, using the best materials for outdoor use, in order to guarantee exceptional durability even under the most demanding environmental conditions.*

















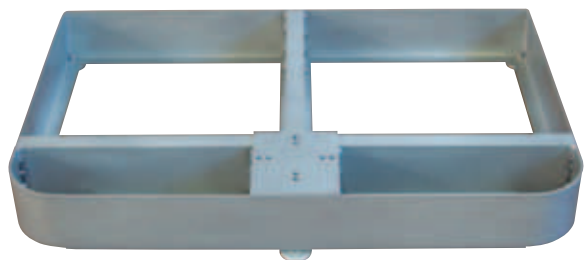








BASI



COD. GBASE003400

### GRUPPO BASE PIASTRA ALU 1

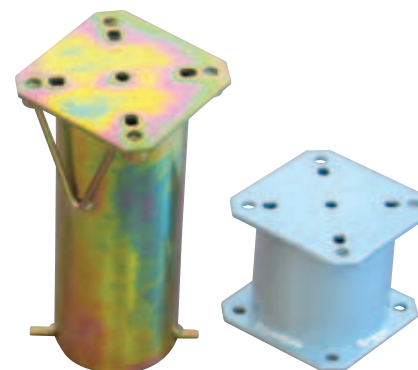
Powder coated aluminium base. Requires concrete pavers 50x50 cm.



COD. PCART001301

### COPERTURA BASE PIASTRA ALU 1

Cover made of powder coated aluminium for GBASE003400.



COD. GBASE000900

### GRUPPO BASE STYLO UNIV + PR

Galvanized steel base to be set into concrete.



COLORS



### **Acrilic fabric**

Water repellent and stain-resistant acrylic fabric. Available in Ecru (raw) colour.  
The ideal fabric, excellent value.  
290 gr/m<sup>2</sup>.

### **Solution dyed Acrylic fabric**

Designed for outdoor use, the solution (spun) dyed acrylic fabric resists salt water, chlorine and any type of harsh climate. Colours do not bleed and remain vibrant for a long time. A specific treatment makes the fabric water repellent, mould resistant and protects it from staining. This type of fabric resists the most extreme conditions and is suitable for year-round use in gardens, terraces, pool sides or on-board boats. It's definitely the top choice canopy fabric to select for your Product.  
UPF 50+ (UV Protection Factor) 280 gr/m<sup>2</sup>.

### **Micro-Mesh fabric**

This fabric allows natural air flow and has an excellent resistance to wind, ensuring a pleasant shading at the same time. Suggested to those who want a surely eye-catching alternative fabric. Its fibre composition, taking advantage of the "Precontraint" technology, guarantees an exceptional resistance to tearing, ultraviolet light and mould.  
410 gr/m<sup>2</sup>.

### **Airfim fabric**

Water repellent fabric assuring total protection from rain, which does not even permeate the stitches. A stain-resistant treatment contributes toward a better dirt resistance of the fabric, too. A regular wash with a neutral cleaning agent guarantees a long lifespan.  
UPF 80 (UV Protection Factor) 190 gr/m<sup>2</sup>.





*Solution dyed Acrilic Fabric*



S00 Natural  
5404



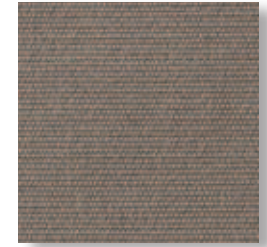
S01 Canvas  
5453



S03 Heather Beige  
5476



S15 Cocoa  
5425



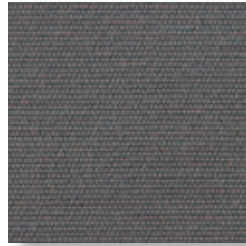
S04 Taupe  
3729



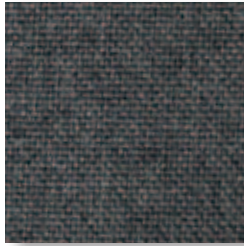
S10 Walnut  
5470



S16 Shingles  
3706



S18 Gray  
3737



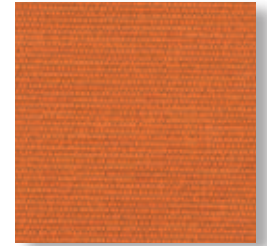
N01 Sooty  
10030



S13 Black  
5408



S21 Sunflower  
5457



S11 Tuscany  
5417



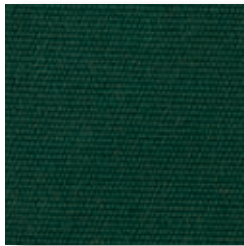
S14 Logo Red  
5477



S19 Clay Court  
3744



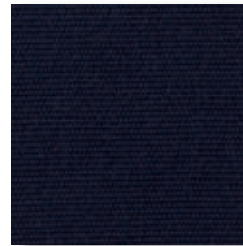
S06 Macao  
3738



S07 Forest Green  
5446



S05 Mineral Blue  
5420



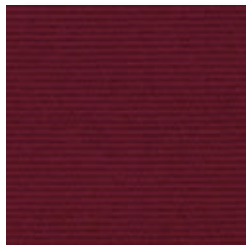
S09 Navy Blue  
5439



S24 Narval  
3763



S28 Parma  
3761



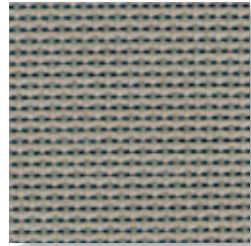
S29 Burgundy  
5436



A00 Ecrù



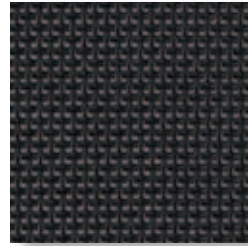
M03 Bianco  
5001



M01 Cenere  
5014



M02 Coffee  
5015



M00 Nero  
5005



I05 Bianco  
9755



I01 Ecrù  
9883



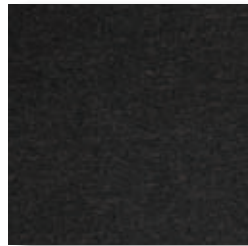
I02 Verde  
9710



I03 Blue  
9545



I00 Bordeaux  
9879



I07 Gray  
9654

*The colors may differ from the real ones.*



FINISHES

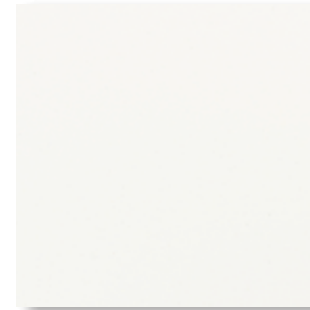
# Frame finishes



SILV



GRAF






BIAN

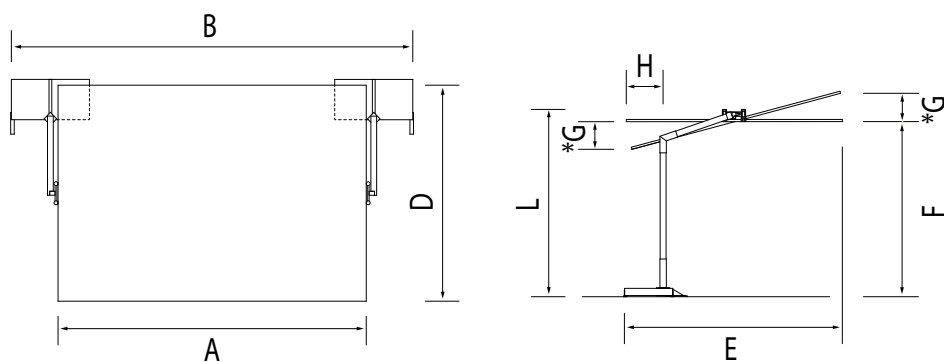
*The materials used have been specifically selected and treated to maintain our products durability and consistency over time.  
The colors may differ from the real ones.*

# TECHNICAL FEATURES

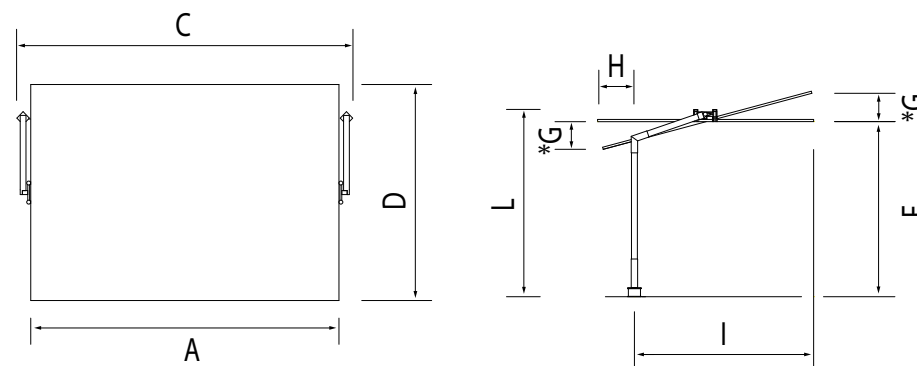


PRODUCT	SIZE (cm)										TECHNICAL FEATURES			
	300x488	300x428	300x369	300x309	300x249	250x488	250x428	250x369	250x309	250x249	STRUCTURE			
FLEXY SILVER	•	•	•	•	•	•	•	•	•	•	Aluminium silver	•	•	2x250 kg
FLEXY GRAFITE	•	•	•	•	•	•	•	•	•	•	Aluminium graphite	•	•	2x250 kg
FLEXY BIANCO	•	•	•	•	•	•	•	•	•	•	Aluminium white	•	•	2x250 kg

FLEXY BASE PIASTRA ALU 1



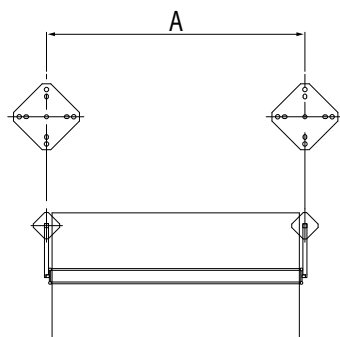
FLEXY BASE STYLO



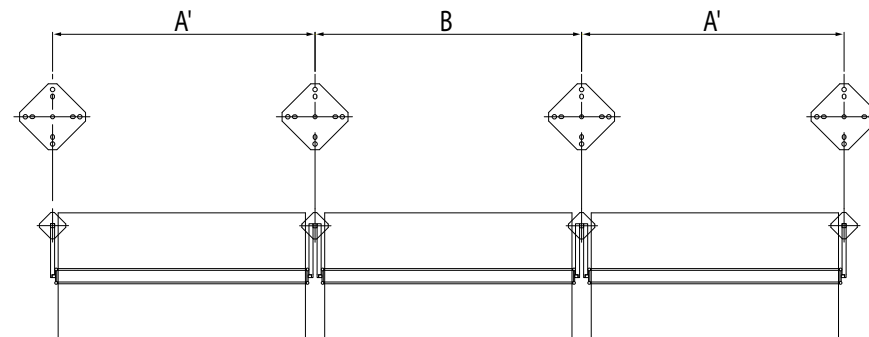
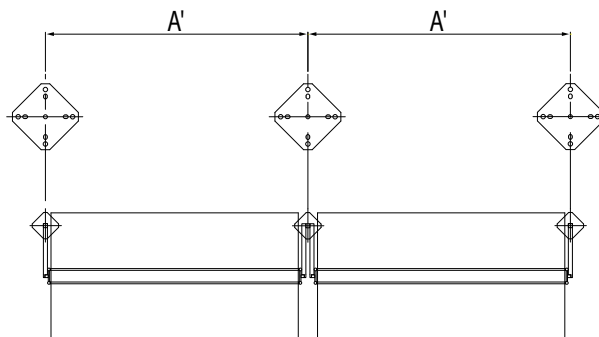
\* each notch corresponds the inclination of G cm.

FLEXY MEASURE TABLE										
SIZE (cm)	A	B	C	D	E	F	G	H	I	L
300x488	488	620	521	300	309	243	35	51	249	258
300x428	428	558	459	300	309	243	35	51	249	258
300x369	369	499	400	300	309	243	35	51	249	258
300x309	309	439	340	300	309	243	35	51	249	258
300x249	249	378	279	300	309	243	35	51	249	258
250x488	488	620	521	250	284	243	35	26	224	258
250x428	428	558	459	250	284	243	35	26	224	258
250x369	369	499	400	250	284	243	35	26	224	258
250x309	309	439	340	250	284	243	35	26	224	258
250x249	249	378	279	250	284	243	35	26	224	258

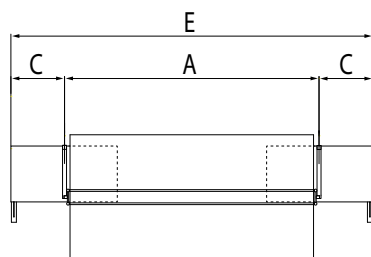
DISTANCES BETWEEN BASES STYLO FOR FLEXY



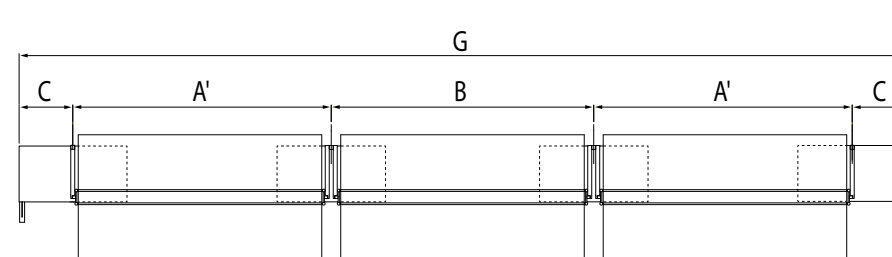
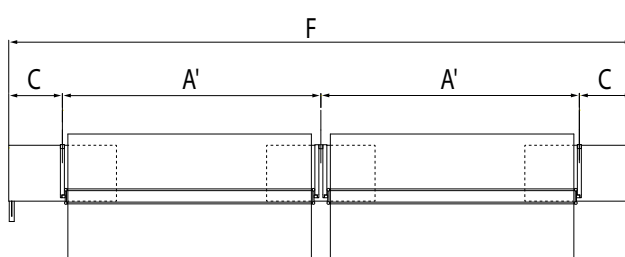
DISTANCES BETWEEN BASES STYLO FOR FLEXY (TWIN POST)



DISTANCES BETWEEN BASES PIASTRA FOR FLEXY



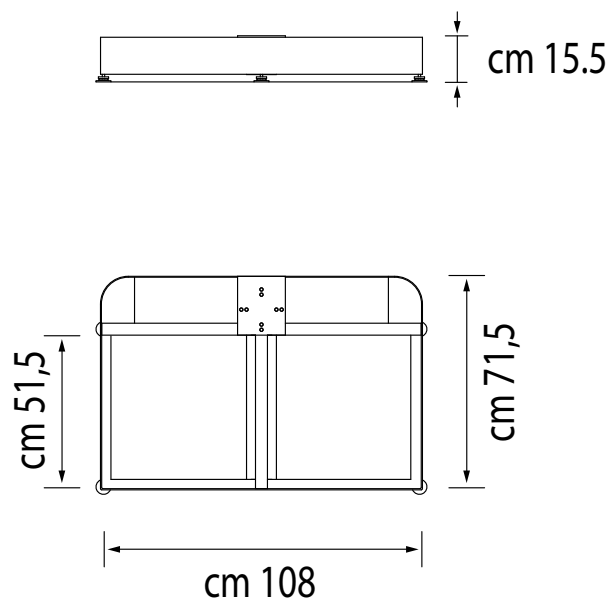
DISTANCES BETWEEN BASES PIASTRA FOR FLEXY (TWIN POST)



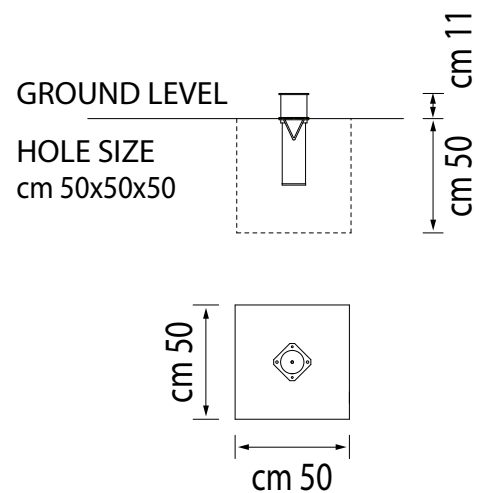
N.B. THE DISTANCES ARE DIFFERENT BY THE KIND OF POST WE USE. NOTE THAT IN CASE OF N. 3 FLEXY REQUIRES THE DISTANCE "B" BECAUSE THE CENTRAL FLEXY IS SUPPORTED BY N. 2 TWIN POSTS. INSTEAD THE FLEXY ON SIDE ARE SUPPORTED BY N. 1 SIDE POST.

DISTANCES TABLE							
SIZE (cm)	A	A'	B	C	E	F	G
300x488	512	520	528	54	620	1148	1676
300x428	450	458	466	54	558	1024	1490
300x369	391	399	407	54	499	906	1313
300x309	331	339	347	54	439	786	1133
300x249	270	278	286	54	378	664	950
250x488	512	520	528	54	620	1148	1676
250x428	450	458	466	54	558	1024	1490
250x369	391	399	407	54	499	906	1313
250x309	331	339	347	54	439	786	1133
250x249	270	278	286	54	378	664	950

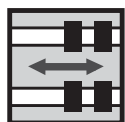
GBASE003400



GBASE000900



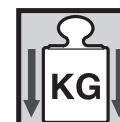
# SIMBOLS TABLE



Double crossbar.



Tilt system of the canopy.



Minimum required base weight.