

**PROSTOR**<sup>®</sup>  
SHADE SOLUTIONS

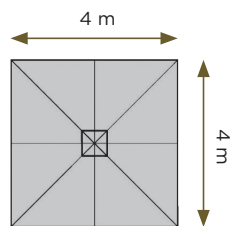
## UMBRELLA P8

Easy to use due to light operation  
Durable materials  
Contemporary, sophisticated design  
Completely integrated LED light  
Made in Belgium

[WWW.PROSTOR.BE](http://WWW.PROSTOR.BE)



## Dimensions



## Fabric



White Sand



Black Widow



Taupe



Fade resistant



Water-repellent & Stain proof



Mold resistant



Easy care

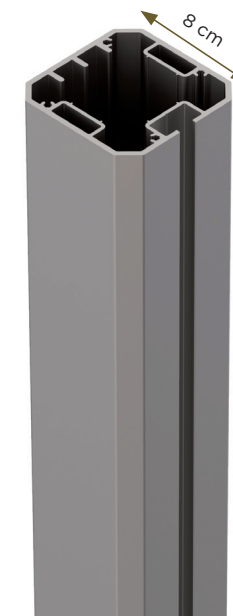


Protects from UV



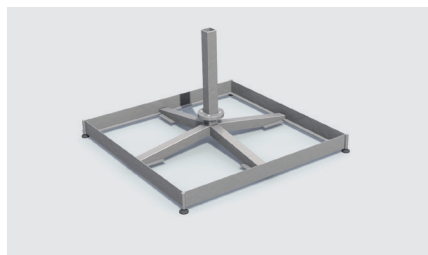
WARRANTY  
5  
YEARS  
Colour retention

## Finishing Pole and Frame

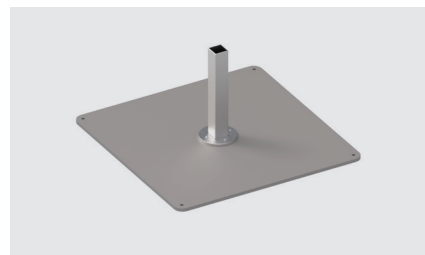


100% Aluminium  
Grey textured coating (RAL 9007)

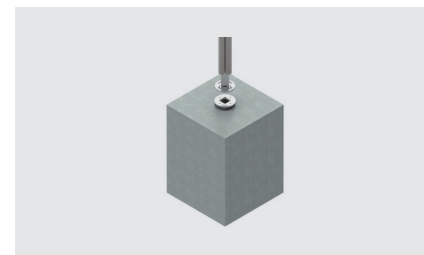
## Fixation



Steelbase  
90 x 90 cm  
100 x 100 cm



Floorplate  
70 x 70 cm



Adjustable groundanchor  
15°

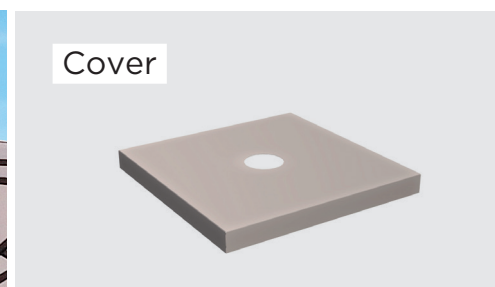
## Accessories



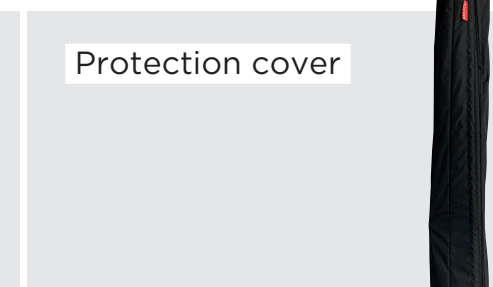
LED is integrated in spoke.



Several umbrellas can easily be connected.



Stylish cover for steel base.



Cover in All Weather fabric.

